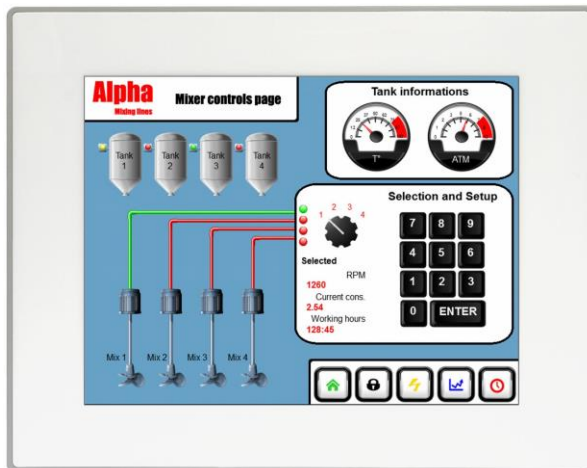


# UniOP eTOP512W

The UniOP eTOP Series 500W HMI products combine state-of-the-art features and top performance with an outstanding design. They are the ideal choice for all demanding HMI applications including factory and building automation. These products are a cost-effective and low-power requirement platform for delivering applications based on Microsoft Windows CE 6.0 R3. The eTOP512W features a bright 12.1" TFT 4:3 display with a fully dimmable LED backlight.



- ARM Cortex A8 1GHz CPU
- 256MB DDR RAM
- 12.1" SVGA TFT color display, LED backlight
- 800x600 pixel resolution, 64K colors
- Resistive touchscreen
- 2 Ethernet ports with switch function
- 2 USB Host ports
- SD Card Slot
- Slim design. Mounting depth less than 50mm

## Highlights

The eTOP Series 500W HMI panels are a fast and low-power running the Microsoft Windows CE 6 operating system. The fanless design and wide operating temperature range are suitable for the most demanding industrial environments. The richness of communication options make these products easy to integrate in most systems.

## Technical Data

<b>Display</b>	
Type	TFT
Resolution	800x600, SVGA
Active display area	12.1" diagonal 4:3
Colors	64K
Backlight	LED
Brightness	300 Cd/m <sup>2</sup> typ.
Dimming	Yes
<b>System Resources</b>	
CPU	ARM Cortex A8 1GHz
Operating System	Microsoft Windows CE 6.0
User memory	256 MB Flash
RAM	256MB DDR
<b>Operator Interface</b>	
Touchscreen	Analog resistive
LED indicators	1 (dual color)
<b>Interface</b>	
Ethernet	2 10/100 Mbit with integrated Switch
USB	2 Host Interface (1 version 2.0, 1 version 2.0 and 1.1)
Serial	RS-232, RS-485, RS-422, software configurable
Expansion Slot	2 Optional plug-in
Memory Card	SD Card Slot
<b>Functionality</b>	
Hardware Real Time Clock	Yes, with battery back-up
Screen saver	Yes
Buzzer	Yes, audible feedback for touchscreen
<b>Ratings</b>	
Power supply voltage	24 Vdc (10 to 32 Vdc)
Current consumption	1.05A at 24Vdc (max.)
Fuse	Automatic
Weight	Approx 2.8 Kg

Battery Rechargeable Lithium battery, not user-replaceable

### Environmental Conditions

Operating temperature 0 to 50 °C (vertical installation)  
 Storage temperature -20 to +70 °C  
 Operating and storage humidity 5 – 85 % relative humidity, non-condensing  
 Protection class IP66 (front)  
 IP20 (rear)

### Dimensions

Faceplate LxH 336x267 mm (13.22x10.51")  
 Cutout AxB 326x256 mm (12.83x10.07")  
 Depth D+T 56+4 mm (2.20+0.16")

### Approvals

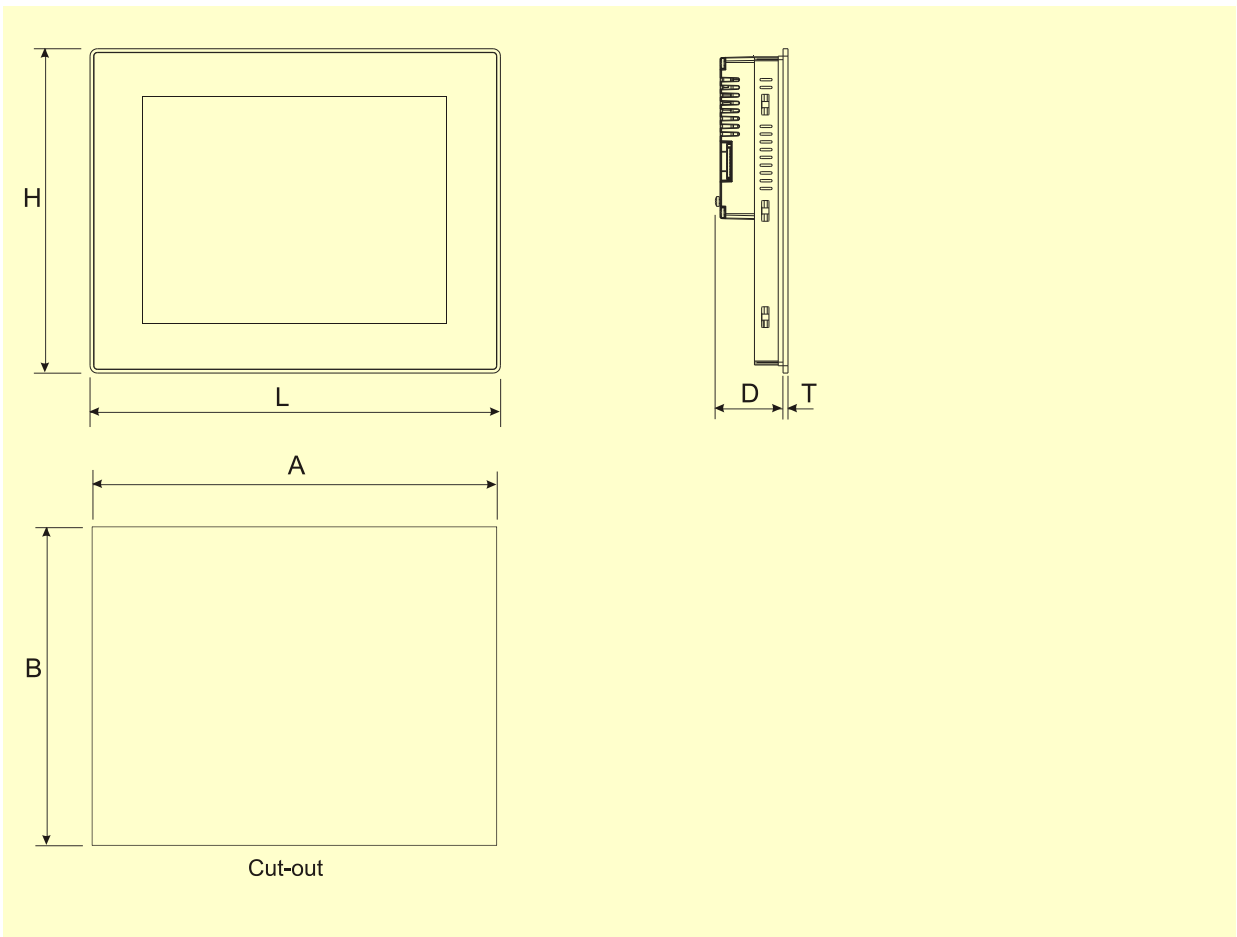
CE Emission EN 61000-6-4  
 Immunity EN 61000-6-2  
 for installation in industrial environments

DNV DNV Type Approval Certificate

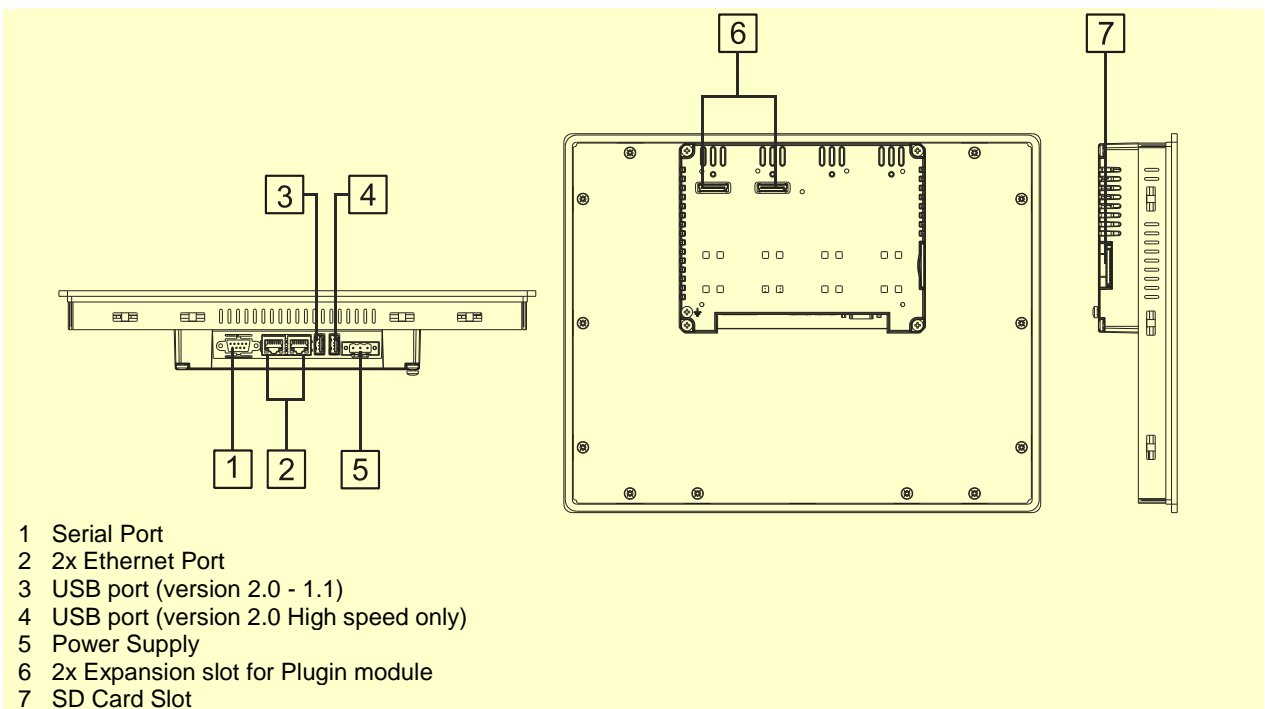
UL UL508 Listed  
 Haz. Loc. Class I, Division 2, Groups A,B,C and D.

C-Tick C-Tick mark

**Dimensions**



**Connections**



**Ordering Information**

<b>Model</b>	<b>Part Number</b>	<b>Description</b>
eTOP512W-White	+ETOP512U1PW	12.1" TFT color touchscreen with Ethernet and USB interfaces. White front panel.
eTOP512W-Silver	+ETOP512U2PW	12.1" widescreen TFT color touchscreen with Ethernet and USB interfaces. Silver front panel.
eTOP512W-Black	+ETOP512U3PW	12.1" widescreen TFT color touchscreen with Ethernet and USB interfaces. Black front panel.
PROTFOIL-13-GL	R-PROT15	Disposable protection foil for 12.1" eTOP touch panels (10 pieces).
PROTFOIL-13-UV	R-PROT21	Disposable protection foil for 12.1" eTOP touch panels (10 pieces). UV resistant.

---

**ptn0490**

**Ver. 1.0 Copyright © 2014 Exor International S.p.A. – Verona, Italy**

Subject to change without notice

The information contained in this document is provided for informational purposes only. While efforts were made to verify the accuracy of the information contained in this documentation, it is provided "as is" without warranty of any kind.

[www.exorint.net](http://www.exorint.net)